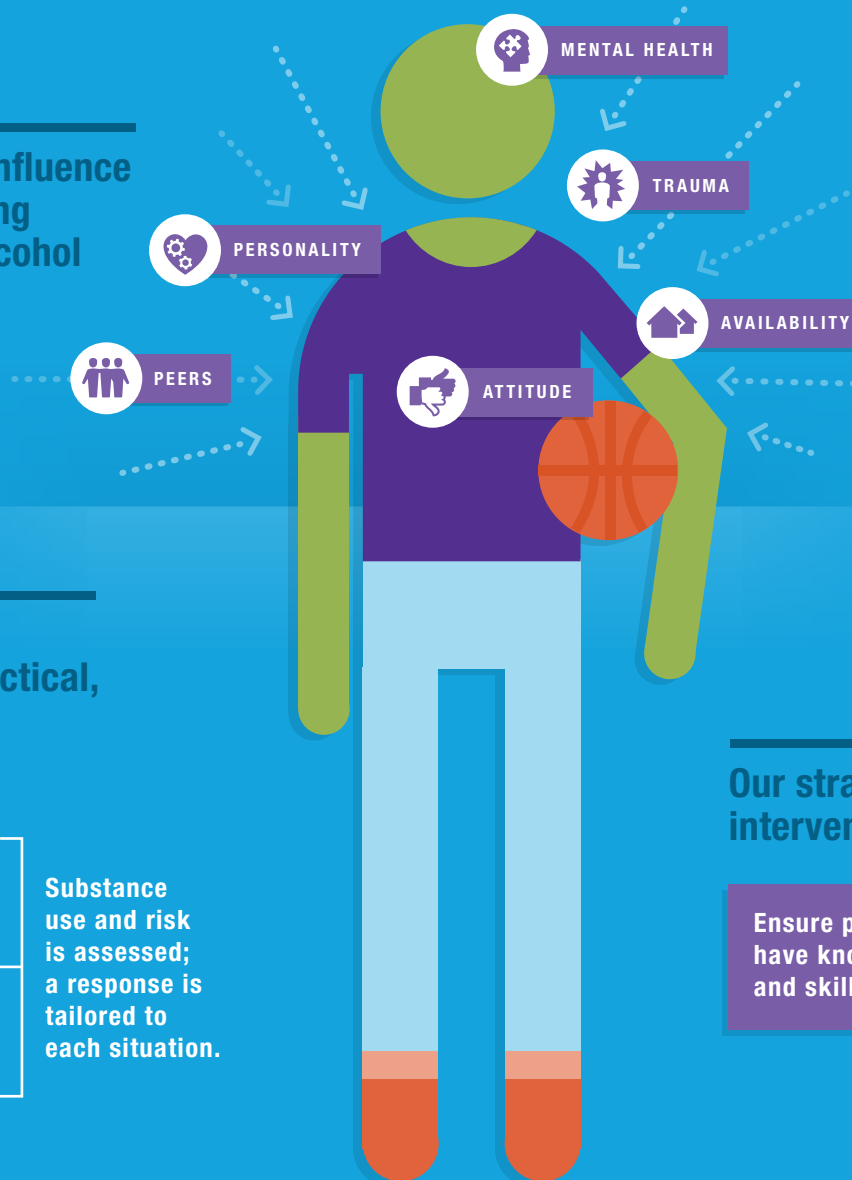


IDENTIFYING EARLY WARNING SIGNS

Youth are especially vulnerable to developing substance use disorders, which carry the potential for life-altering consequences. The Conrad N. Hilton Foundation's strategy focuses on screening and early intervention.

Many factors influence whether a young person tries alcohol or other drugs.

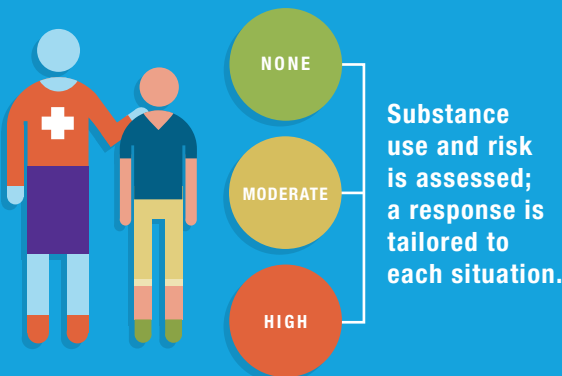


Teen years are the critical time of vulnerability. Experimentation can lead to risky behaviors and repeated use.



Young people who use alcohol or other drugs before age 15 are five times more likely to develop a substance use disorder.

Screening and early intervention is a practical, proven approach.



Our strategy: Invest in screening and early intervention through three goals.

Ensure providers have knowledge and skills.

Improve funding, access, and implementation.

Conduct research and advance learning.